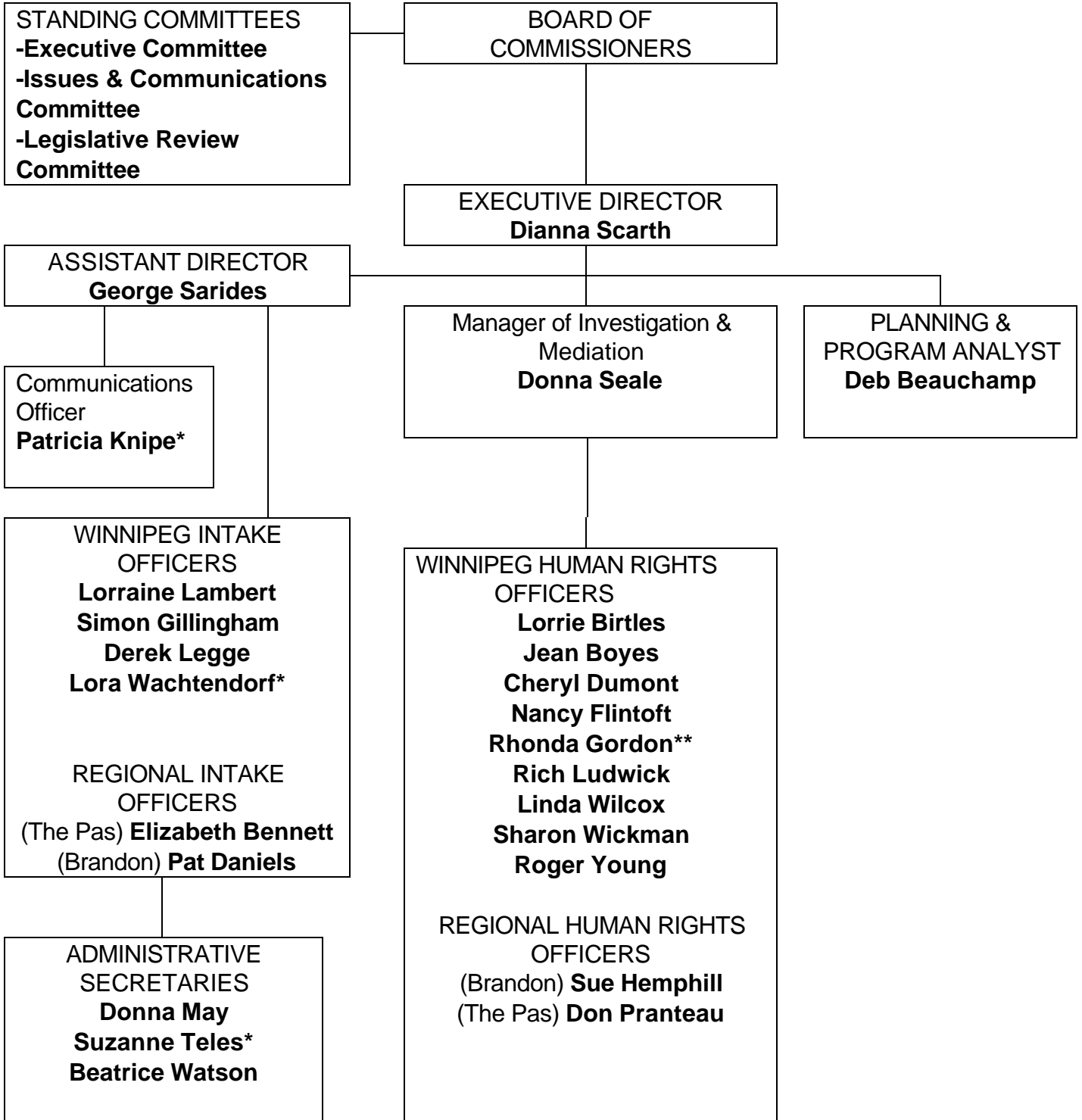


MANITOBA HUMAN RIGHTS COMMISSION ORGANIZATION CHART



* Half-time

** .7 time

Statistics

Pre-complaint dispositions 2001:

Activity	# of Files	%
13(1) Services	17	19.32 %
14(x) Employment	42	47.73 %
16(1) Housing	11	12.50 %
19(x) Harassment	18	20.45 %
20(1) Reprisal	0	0.00%
TOTAL (88)	88	100%

Grounds	# of files	%
Age	7	7.69%
Ancestry	11	12.09%
Disability	38	41.76%
National Origin	1	1.10%
Marital / Family	7	7.69%
Political Belief	0	0.00%
Religion	2	2.20%
Sex (incl. Pregnancy)	20	21.98%
Sexual Orientation	2	2.20%
Source of Income	3	3.30%
Other (Undifferentiated)	0	0.00%
Total (88)	91	100%

Formal Complaint Files opened in 2001

<u>Activity</u>	<u># of files</u>	<u>%</u>
13(1) Services	47	19.50%
14(x) Employment	135	56.02%
16(1) Housing	10	4.15%
19(x) Harassment	42	17.43%
20(1) Reprisal	5	2.07%
15, 17, 18 Other	<u>2</u>	0.83%
Total (241)	241	100%

<u>Grounds</u>	<u># of files</u>	<u>%</u>
Age	23	9.16%
Ancestry	38	15.14%
National Origin	5	1.99%
Disability	84	33.47%
Marital / Family	13	5.18%
Political Belief	2	0.80%
Religion	6	2.39%
Sex (incl. Pregnancy)	72	28.69%
Sexual Orientation	2	0.80%
Source of Income	2	0.80%
Other (Undifferentiated)	<u>4</u>	1.59%
Total (241)	251	100%

* Note that some complaints include multiple grounds and the figure in “(#)” indicates the total number of grounds in all complaints filed.

Total Pre and Formal Complaints 2001 by Activity

<u>Activity</u>	<u># of files</u>	<u>%</u>
13(1) Services	64	19.45%
14(x) Employment	177	53.80%
16(1) Housing	21	6.38%
19(x) Harassment	60	18.24%
20(1) Reprisal	5	1.52%
15, 17, 18 Other	<u>2</u>	<u>0.61%</u>
Total (88+241=329)	329	100%

Total Pre and Formal Complaints 2001 by Grounds

Grounds	# of files	%
Age	30	8.77%
Ancestry	49	14.33%
National Origin	6	1.75%
Disability	122	35.67%
Marital / Family	20	5.85%
Political Belief	2	0.58%
Religion	8	2.34%
Sex (incl. Pregnancy)	92	26.90%
Sexual Orientation	4	1.17%
Source of Income	5	1.46%
Other (Undifferentiated)	4	1.17%
Total	342	100%

*Note that some complaints include multiple grounds and the figure in "(#)" indicates the total number of grounds in all complaints filed.

Formal Complaint Files – Year End Summary – 2001

Formal complaints brought forward from 2000	246
Formal complaint filed in 2001	+ <u>241</u>
	Total 487
Formal complaint files closed in 2001	- <u>227</u>
Formal complaint files carried over to the 2002 calendar year	= 260

Status of Complaints carried over to the 2002 calendar year:

In Investigation	168
In Pre-Investigation Mediation	27
In Directed Mediation	<u>24</u>
Total	117

FORMAL COMPLAINTS FILED

1990	1991	1992	1993	1994	1995	1996	1997	1998	1999	2000	2001
245	265	216	149	150	169	218	308	262	252	261	241

Disposition of Formal Complaints by Activity based on files closed in 2001

Activity (# of Files)	Pre- investigation negotiation	Settled in Investigation/ Negotiation *	Withdrawn/ Abandoned	Dismissed	Settled in Directed Mediation	Referred to Adjudication	Settled by parties	Terminate Other or Not Pursued
13(1) Services	7	1	8	15	4	1	4	2
14(x) Employment	15	8	29	51	1	18	7	6
15(1) Contracts	0	0	0	1	0	0	0	0
16(1) Housing	1	0	4	2	1	1	1	0
19(x) Harassment	7	3	5	14	2	1	2	1
20(1) Reprisal	0	0	0	3	0	0	1	0
Totals (227)	30	12	46	86	8	21	15	9

Disposition of Formal Complaints by Grounds

Grounds (# of Files)	Pre- investigation negotiation	Settled in Investigation/ Negotiation *	Withdrawn/ Abandoned	Dismissed	Settled in Directed Mediation	Referred to Adjudication	Settled by parties	Terminate Other or Not Pursued
Age	2	0	3	3	0	0	0	0
Discriminatory	3	2	7	26	1	0	0	3
Racial Origin	1	0	0	1	0	1	0	0
Disability	9	4	19	19	3	3	11	4
Marital / Family	3	0	4	5	0	0	0	0
Political Belief	0	0	0	1	0	0	0	0
Religion	1	0	1	1	1	0	0	0
Sex	10	3	12	25	2	16	4	2
Sexual Orientation	0	1	0	3	1	1	0	0
Source of Income	1	0	0	0	0	0	0	0
Undifferentiated	0	2	0	2	0	0	0	0
Totals (227)	30	12	46	86	8	21	15	9

***The figures reported in the "Settled in Investigation / Negotiation" section include the number of formal complaints that were settled during investigation or in mid-investigation negotiations.**